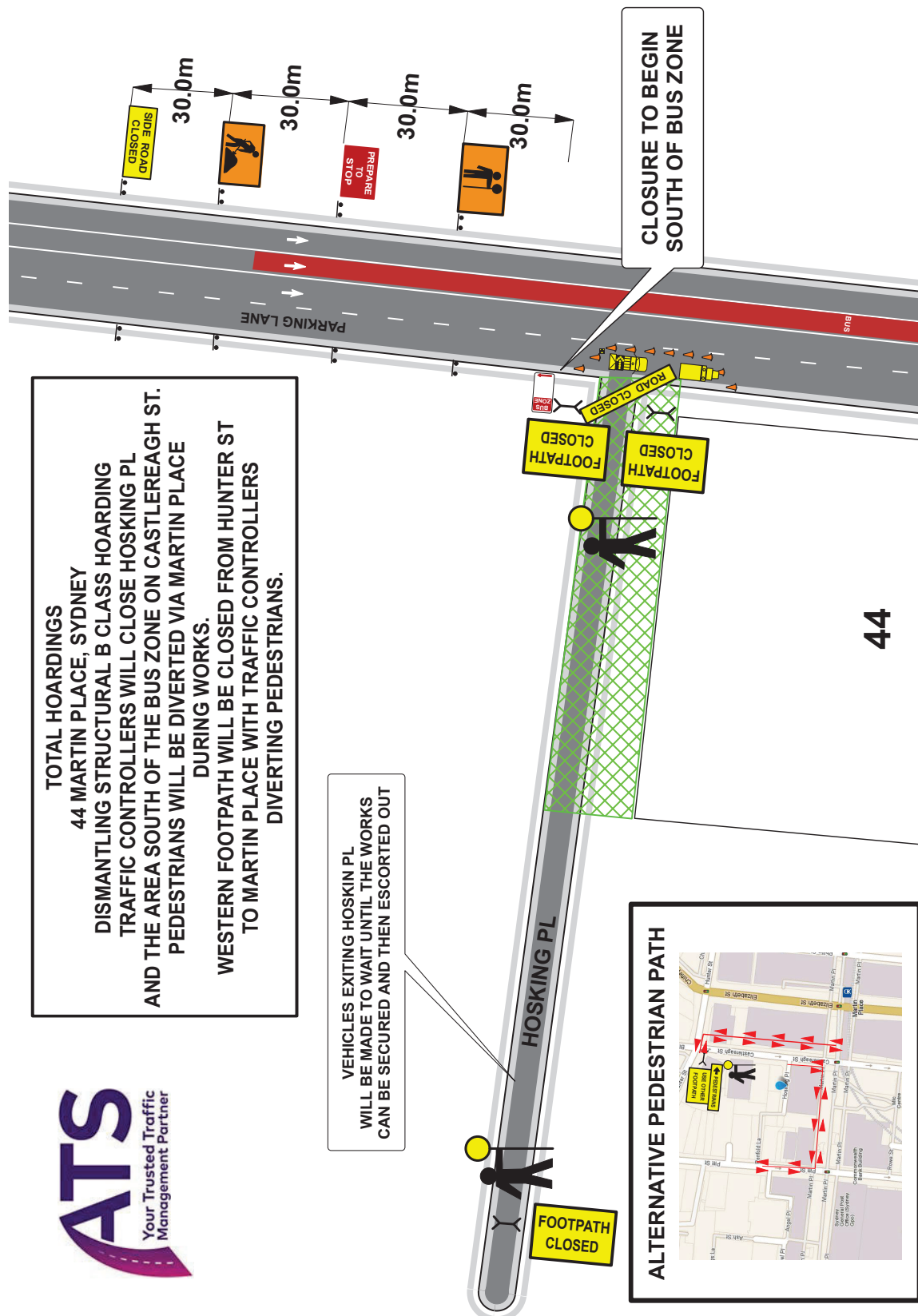
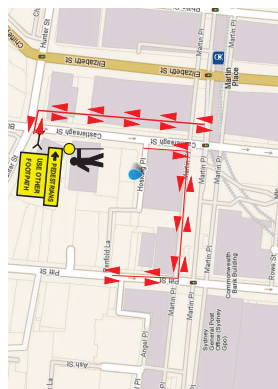




44 MARTIN PLACE, SYDNEY
DISMANTLING STRUCTURAL B CLASS HOARDING
TRAFFIC CONTROLLERS WILL CLOSE HOSKING PL
AND THE AREA SOUTH OF THE BUS ZONE ON CASTLEREAGH ST.
PEDESTRIANS WILL BE DIVERTED VIA MARTIN PLACE
DURING WORKS.
WESTERN FOOTPATH WILL BE CLOSED FROM HUNTER ST
TO MARTIN PLACE WITH TRAFFIC CONTROLLERS
DIVERTING PEDESTRIANS.

VEHICLES EXITING HOSKIN PL
WILL BE MADE TO WAIT UNTIL THE WORKS
CAN BE SECURED AND THEN ESCORTED OUT

ALTERNATIVE PEDESTRIAN PATH



Legend	
	Cone
	TC VEHICLE
	Work Area

[illegible]

* This plan remains the property of All Traffic Hire. *This TCP is not to scale. *This TCP Complies with Australian Standards 1742-3 and the RTA Traffic Control at Work Sites Manual.